



Clean Light
Green Light

CLGL 342 Installation Instructions



WHERE LED TECHNOLOGY LIVES

Recessed Fixture Compatibility

- The CLGL 342 is designed to install in maximum four lamp UL and C-UL listed surface or recessed mounted fluorescent luminaires.
- Designed for the retrofit of T12, T10 and T8 fluorescent luminaires.

Not for use with dimmers. Not for use with ballasts.

Ne pas relier a un luminaire commande par aux gradateur.

Not for use where exposed to weather.

WARNING: Risk of fire or electric shock. Luminaires wiring, ballasts or other electrical parts may be damaged when drilling for installation of reflector kit hardware. Check for enclosed wiring and components.

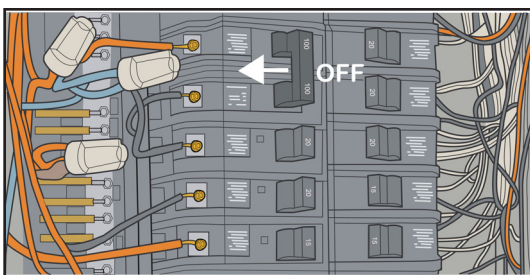
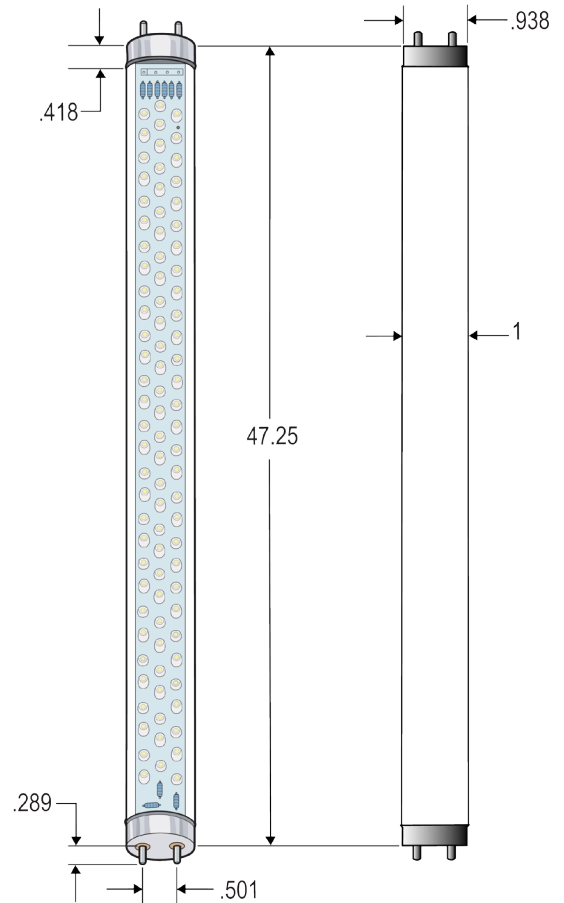
WARNING: Risk of fire or electric shock. Install this kit only in the luminaires that have the same construction features and demensions shown in the photographs and/or drawings.

WARNING: To prevent wiring damage or abrasion, do not expose wiring to the edges of sheet metal or other sharp objects.

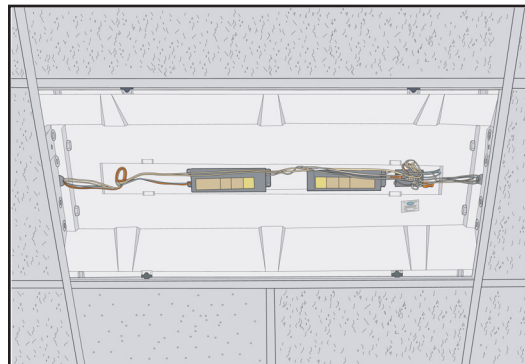
Do not make or alter any open holes in an enclosure of wiring or electrical components during kit installation.

Installation of this retrofit assembly requires a person familiar with the construction and operation of fluorescent luminaire electrical systems and the hazards involved.

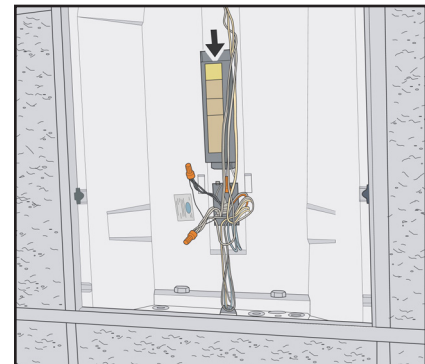
NOTE: This device is not intended for use with emergency exit fixtures or emergency lights.



1. Turn off the power by means of safety disconnect switch or breaker to the fixtures your are working on.



2. Once the power has been turned off, remove the existing bulbs and center ballast channel. Affix Luminaire Warning Label provided.

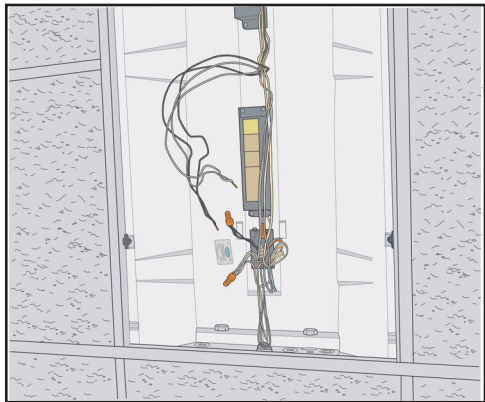


3. Identify the input voltage of the luminaire that is the candidate for retrofit.

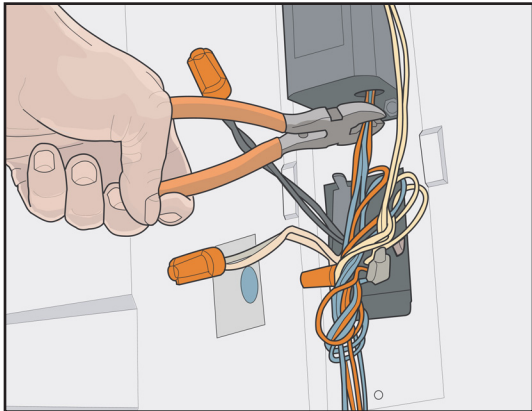
CUSTOMER SERVICE

1.888.499.LEDS(5337)

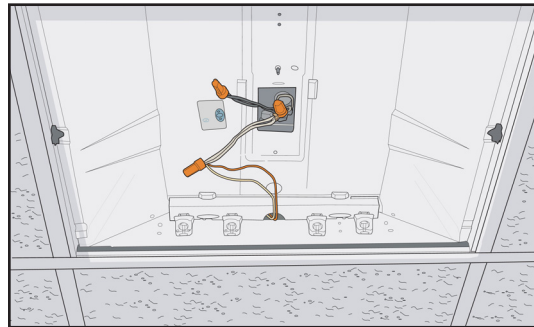
cleanlightgreenlight.com



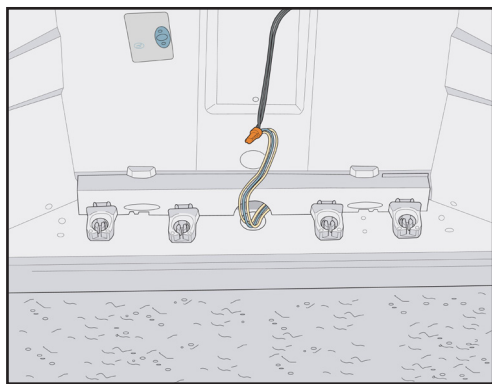
4. Locate the ballast. disconnect line voltage wires.



5. Cut ballast wires from ballast. Remove ballast.



6. When ballast is removed, connect one side of the fixture wires to either side of the incoming power (line or neutral).



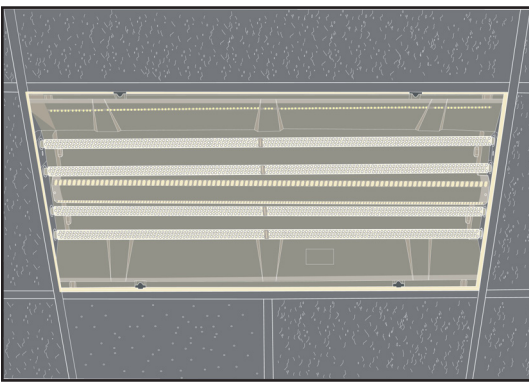
7. Connect remaining side of the fixtures wire harness to the remaining side of the incoming wiring.



8. Once complete, install center ballast channel.



9. Install Notice sticker to inside of the fixture that can be easily seen when the cover is taken off.



10. Install tubes. Turn on the power and enjoy your new CLGL342 Tubes.

LIMITED WARRANTY

The limited warranty set forth below is given by Clean Light Green Light ("CLGL") with respect to the lighting product packaged with this limited warranty (the "Product"). Your Product, when delivered to you in new condition in its original packaging, is warranted against defects in materials or workmanship as follows: for a period of five (5) years from the date of original purchase, defective parts or a defective Product returned to CLGL, or its authorized service providers, as applicable, and proven to be defective upon inspection, will be repaired, or exchanged for a new Product, as determined by CLGL, or the authorized service provider. This limited warranty covers all defects encountered in normal use of the Product, and does not apply in the following cases: Loss of or damage to the Product due to abuse, mishandling, alteration, accident, electrical current fluctuations, failure to follow operating, maintenance or environmental instructions prescribed by CLGL in writing or services performed by someone other than CLGL or its authorized service provider. WARRANTY IS VOID IF PRODUCT IS NOT USED FOR THE PURPOSE FOR WHICH THIS PRODUCT IS MANUFACTURED. Any complaints you may have regarding the product should be addressed to Clean Light Green Light at www.cleanlightgreenlight.com.

NO IMPLIED WARRANTY, INCLUDING ANY IMPLIED WARRANTY OF MERCHANTABILITY OR FITNESS FOR A PARTICULAR PURPOSE, APPLIES TO THE PRODUCT AFTER THE APPLICABLE PERIOD OF THE EXPRESS LIMITED WARRANTY STATED ABOVE, AND NO OTHER EXPRESS WARRANTY OR GUARANTY GIVEN BY ANY PERSON OR ENTITY WITH RESPECT TO THE PRODUCT SHALL BIND CLGL. (SOME STATES AND PROVINCES DO NOT ALLOW LIMITATIONS ON HOW LONG AN IMPLIED WARRANTY LASTS, SO THE ABOVE LIMITATION MAY NOT APPLY TO YOU.)

Customer Service

1.888.499.LEDS(5337)

cleanlightgreenlight.com